

Venue



College of Design
and Engineering



Department of the Built Environment
College of Design and Engineering
National University of Singapore
4 Architecture Drive,
Level 4 , Executive Room 1 & 2 : SDE4-04-01 & SDE4-04-02,
Singapore 117356

Travel advice and suggestions

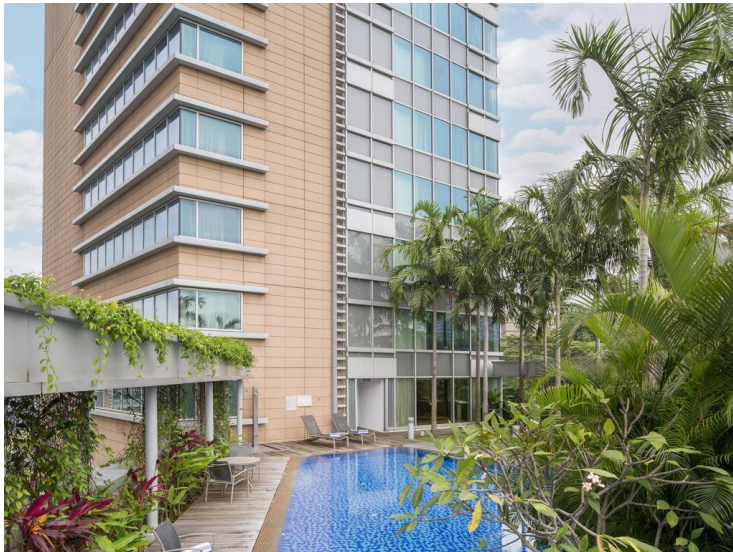
Get Vaccinated: We strongly encourage you to get your vaccine as soon as it is available to you. We recommend that you are fully vaccinated (14 days after your vaccine shot) prior to traveling to the event. You can visit [this](#) website to find out more about the latest travel requirements to Singapore

TraceTogether (TT) App: Travellers are required to use the TraceTogether (TT) App. The TT App can be downloaded from [Apple App Store](#), [Google Play Store](#) and [Huawei AppGallery](#). Upon clearing immigration, travellers can activate and use the TT App for the duration of their stay in Singapore.

You can visit [this](#) website on how to set up the TraceTogether App upon arrival in Singapore

Hotel recommendations - hotels near NUS

[Park Avenue Rochester Hotel](#)



31 Rochester Drive, Queenstown

Singapore 138637

Distance to SDE4 - 14 minutes bus ride (Take bus 95 from Essec Business Sch bus stop to Opp NUS Fac Of Architect bus stop)

[Lyf One-north Singapore](#)



80 Nepal Park

Singapore 139409

Distance to SDE4 - 14 minutes bus ride (Take bus 85 from Essec Business Sch bus stop to Opp NUS Fac Of Architect bus stop)

The Quay Hotel West Coast



428 Pasir Panjang Road
Singapore 118769
Walking distance to SDE4 - 10 minutes

Fragrance Hotel - Ocean view



Pasir Panjang Road
Singapore 118773
Walking distance to SDE4 - 9 minutes

[iBis Budget Singapore West Coast](#)



418 Pasir Panjang Road,
Singapore 118759
Walking distance to SDE4 - 9 minutes

Transportation - Getting Around Singapore

(Information from visitsingapore.com)

By Train



Singapore's MRT (Mass Rapid Transit) system is the fastest and cheapest way to travel around the city. Most of Singapore's popular attractions are just a short walk away from an MRT station, making our trains a great way to get around.

You can use the following options for MRT journeys:

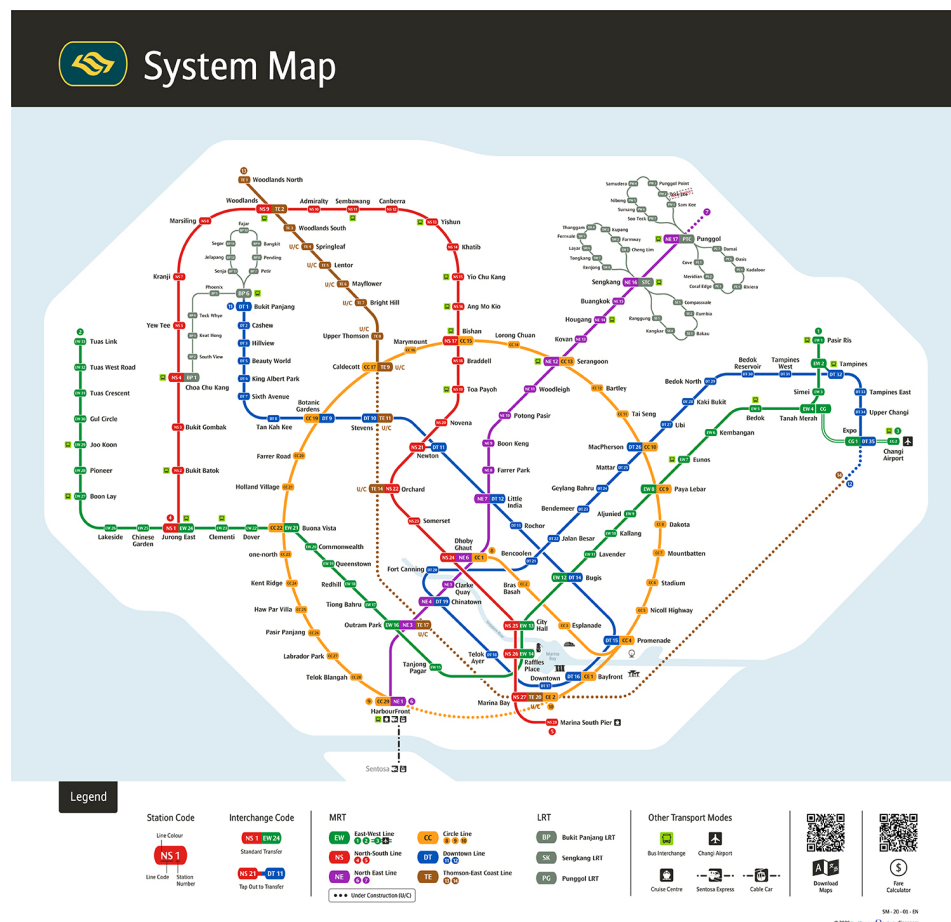
1. Get a [Singapore Tourist Pass \(STP\)](#), a special EZ-Link stored-value card which will allow you unlimited travel for one day (S\$10), two days (S\$16) or three days (S\$20).

The Pass can be bought at the TransitLink Ticket Office at selected MRT stations listed [here](#), or at the Concession Card Replacement Office at Somerset station. They are also available daily at the Changi Airport station (Terminal 2 and 3) near the Transitlink Ticket Office.

2. You can use your foreign-issued Mastercard® and Visa contactless bank cards issued outside of Singapore for the payment of public transport fares in Singapore.

Do take note that admin fees apply for foreign-issued bank cards— you can check out the details at TransitLink's [SimplyGo website](#).

3. Adult Stored Value Smartcard (EZ-link / Nets FlashPay): These cost \$12 inclusive of card value, and come with a stored value of \$7 for you to use on your commutes. You'll be able to purchase this card at any [Transitlink Ticket Office](#) or convenience stores.



MRT route Map



Singapore Tourist Pass



Adult Stored Value Smartcard - The EZ-link card

By Bus



Singapore's bus system has an extensive network of routes covering most places in Singapore.

Besides being an economical way to get around, it's one of the most scenic — you'll be able to indulge in air-conditioned comfort, as you admire the lush greenery and beautiful architecture of our 'city in a garden'. You can pay for your bus fare using an adult stored value smartcard (EZ-link / Nets FlashPay) or the Singapore Tourist Pass (STP). Just keep an eye out for the electronic card reader — located next to the bus driver—and tap as you board.

You can also use your foreign-issued Mastercard® and Visa contactless bank cards issued outside of Singapore to pay for your ride.

Remember to tap your card again, on the reader located at the rear exit, when you alight. You can also opt to pay in cash, but make sure you have the exact amount in change. Do note that admin fees apply for foreign-issued bank cards. You can find out more details at TransitLink's [SimplyGo website](#).

For more useful information—including traffic news, journey planning and nearby transport services—download the MyTransport app (available for [iOS](#) and [Android](#)).

By Taxi

Taxis are comfortable and especially handy if you want to go to places not accessible by the bus or MRT. Cabs here are metered, but there may be surcharges depending on when, where and which company's taxi you board.

To get a rough idea of the final fare, check with the driver on the surcharges and ask for a receipt at the end of the trip. You can also check out [this website](#) for a quick and easy comparison.

You can hail a taxi by the roadside at most places, or by queuing for one at a taxi stand, which you'll find at most malls hotels and attractions.

The taxi companies in Singapore also has apps for customers to take their taxis. The most convenient app is the ComfortDelGro Taxi-Booking App ([iOS](#) | [Android](#)) which provide access to the largest taxi fleet in Singapore. Other taxi apps include SMRT Book-A-Taxi ([iOS](#) | [Android](#)) and Trans-Cab Taxi App ([iOS](#) | [Android](#))

By ride-hailing apps

In Singapore, we are spoilt for choice when it comes to ride-hailing apps in Singapore. The biggest ride-hailing company is [Grab](#) and there are other ride-hailing apps such as [GoJek](#), [Ryde](#), and [TADA](#).

The ride-hailing app industry in Singapore is regulated and drivers must be registered and possessed appropriate insurance and license.

The ride-hailing apps operate by dynamic pricing model, which is adjusted to balance the demand and supply of drivers and passengers. During peak hours, the distance fare pricing will be escalated to reflect the high demand. They also offered different categories of rides for consumers. For example, Grab offers the following services:

- GrabShare: On-demand carpool, could be private hire car or taxi
- GrabHitch: Carpool in private car, advanced booking required
- JustGrab: Fastest pickup, could be private hire car or taxi
- GrabCar: Private hire ride
- GrabFamily: Ride for families with children who need booster seats
- GrabPet: Ride for passengers with pets

You can visit this [grab](#) and [gojek](#) website on how to book a ride around Singapore